

Dry Screw Pump

SDE Series

Dry pumps reliable for all applications.
Energy-saving feature combined with the reliability, SDE Series achieved lower running cost.



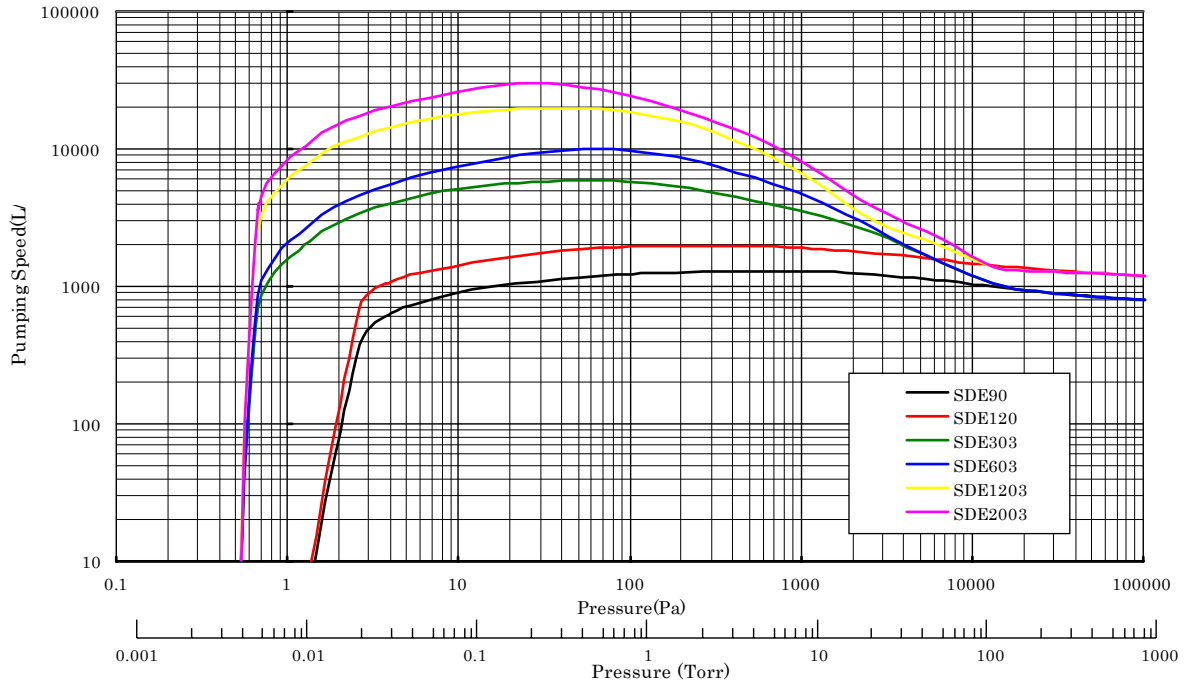
- Advanced screw technology allows longer life operation under hard applications.
- Anti-corrosion material construction allows pumping of corrosive gasses.
- The unique screw design and driving system realized 40% reduction in energy consumption, compared to conventional models.

Specification Table

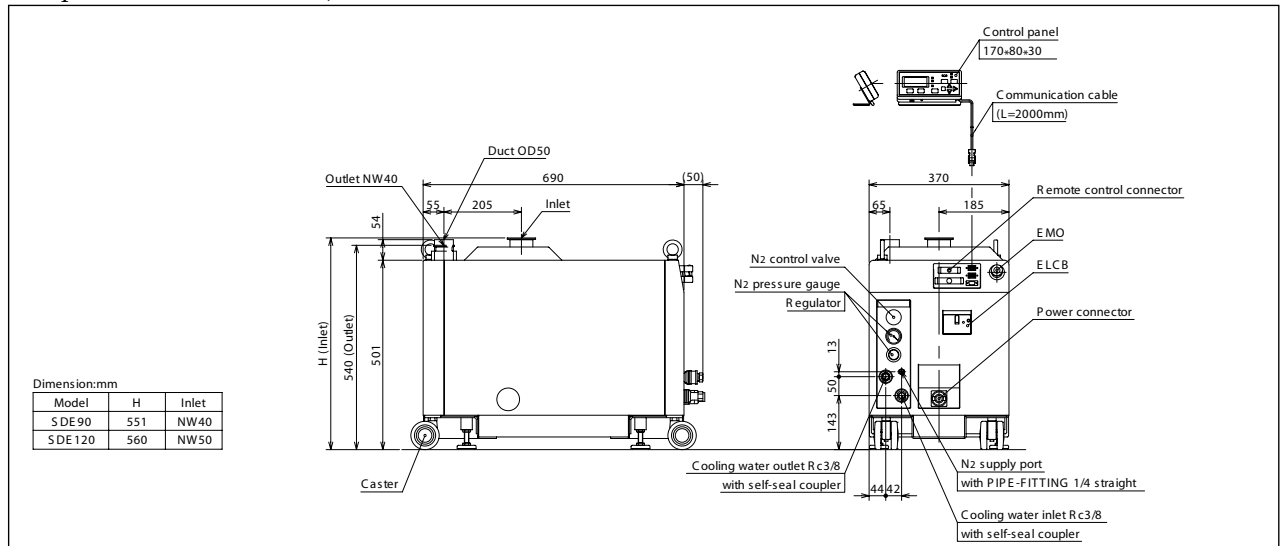
Specification	Model	SDE90	SDE120	SDE303	SDE603	SDE1203	SDE2003
Maximum Pumping Speed (L/min)		1,300	2,000	5,000	10,000	20,000	30,000
Ultimate Pressure (Pa)		1.3		0.5			
Maximum Inlet Pressure (Pa)		Atmospheric pressure					
Inlet Flange		NW40	NW50	NW80		NW100	NW160
Outlet Flange		NW40					
Weight(Approx.) (kg)		150	151	260	260	310	470
Electric Power Supply		3 phase AC200-220V 50/60Hz					
Power in normal operation (kW)*		2.8	3.2	3.0	3.1	3.6	4.0
Electric Power Capacity (kVA)		6.5		10.5		13.0	17.6
Cooling Water Supply		4L/min and over					
Purge N2 Gas Supply		0-60SLM					

* Power at ultimate pressure.

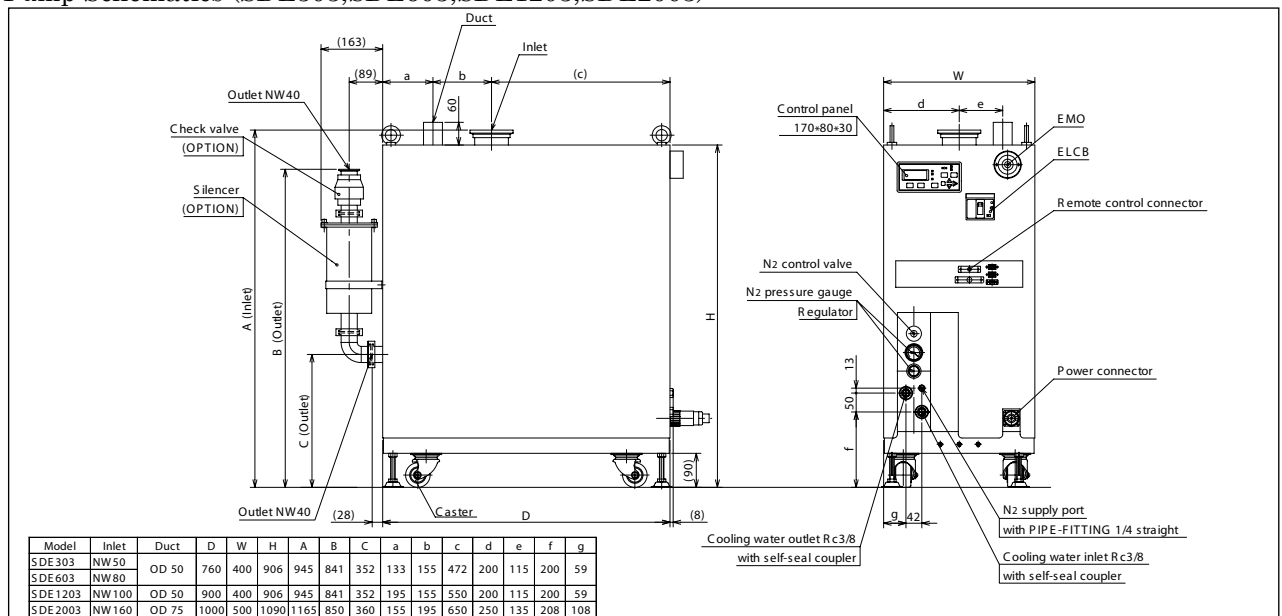
Pumping Curve(SP)



Pump Schematics (SDE90,SDE120)



Pump Schematics (SDE303,SDE603,SDE1203,SDE2003)



Note 1) Because we are constantly working to improve performance and upgrade our products, specifications and diagrammatic representations in this catalog may change without notice.
 Note 2) Products displayed in this catalog must be approved for export in accordance with the Foreign Exchange and Foreign Trade Control Act. Before placing an export order, please contact our Business Department.

- Dry vacuum Pump
- Mechanical Booster Pump
- Air Discharge System

Kashiyama-USA
 URL:www.kashiyama.com/us/
 mail address for inquiries:
 sales@kashiyama.com

DRY SCREW PUMP SDE SERIES